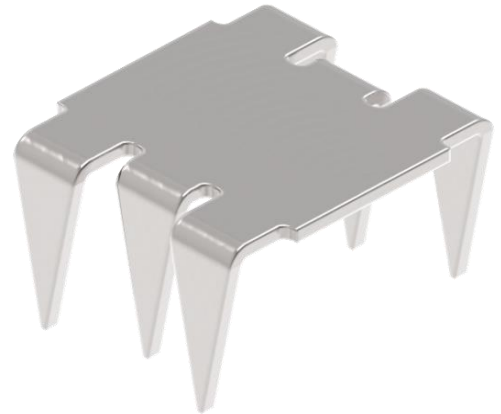


Description	Belt Thickness	Order No.	kg
<b>Belt Fastener S82</b> Leg Length 8 mm, Width 12 mm			
S82 (200)	up to 4 mm	42 701 20 00	0.2
<b>Belt Fastener S83</b> Leg Length 10 mm, Width 14 mm			
S83 (201)	up to 6 mm	42 701 20 10	0.3
<b>Belt Fastener S84</b> Leg Length 12 mm, Width 17 mm			
S84 (202)	up to 8 mm	42 701 20 20	0.5
<b>Belt Fastener S85</b> Leg Length 16 mm, Width 23 mm			
S85 (203)	up to 10 mm	42 701 20 30	1.0
<b>Belt Fastener S86</b> Leg Length 20 mm, Width 25 mm			
S86 (204)	up to 13 mm	42 701 20 40	1.5
<b>Belt Fastener S87</b> Leg Length 23 mm, Width 30 mm			
S87 (205)	up to 15 mm	42 701 20 50	2.4
<b>Belt Fastener S88</b> Leg Length 29 mm, Width 35 mm			
S88 (206)	up to 18 mm	42 701 20 60	4.1
<b>Belt Fastener S89</b> Leg Length 38 mm, Width 43 mm			
S89 (207)	up to 21 mm	42 701 20 70	6.7

Installation without Lacing Tool



Material : Special Steel

Packing Units:  
100 Fasteners